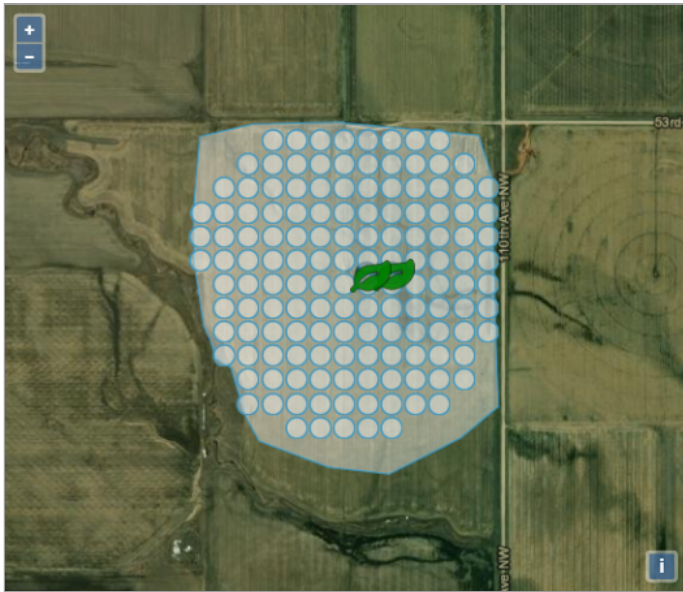


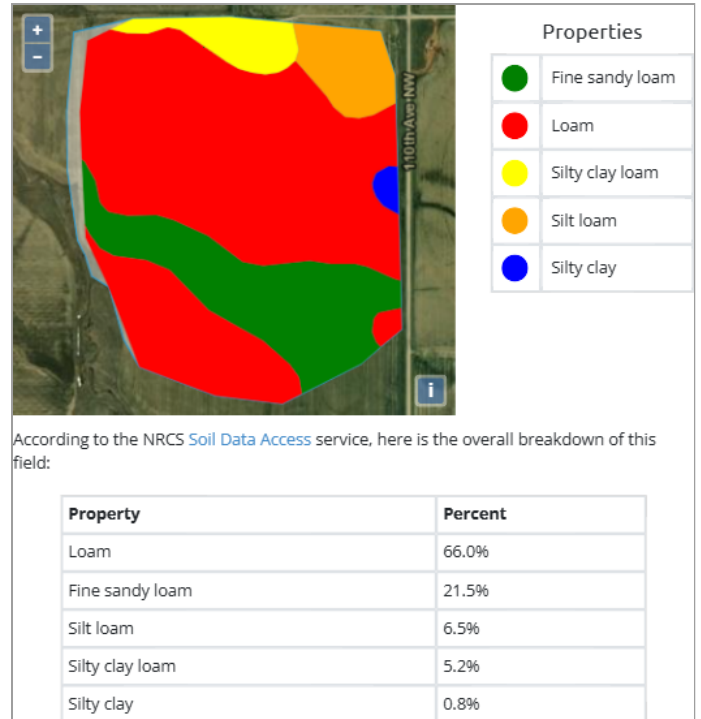
# Product Trial Report

GROWER DETAILS	FIELD DETAILS	PLANTING/HARVEST DETAILS	Total Acre Final Report
<b>Grower:</b>	<b>Total Acres:</b> 179.08	<b>Crop:</b> Corn	<b>Report Date:</b> 01/26/2025
<b>City &amp; State:</b> Tioga, ND	<b>Soil Type:</b> Please see Soil Type Map	<b>Plant Date:</b> 06/05/2024	<b>Harvest Year:</b> 2024
<b>Zip Code:</b> 58852	<b>Tile:</b> No Tile	<b>Row Spacing:</b> 30"	<b>Crop:</b> Corn
	<b>Irrigation:</b> Pivot	<b>Planting Depth:</b> 2.50	<b>Trial Name:</b> Soil Boost Trial (Year 2 of 3 Year Trial)
	<b>Spring Tillage:</b> Strip Till	<b>Harvest Date:</b> 11/10/2024	<b>Trial Type:</b> Preplant
	<b>Previous Crop:</b> Soybean	<b>Hybrid:</b> 1B710	
		<b>Seed Company:</b> REA	
		<b>Population:</b> 34000	

Field Map

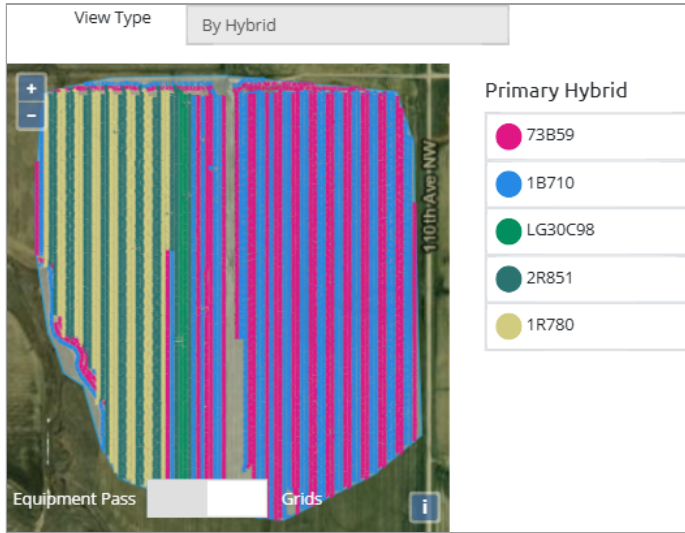


Soil Type

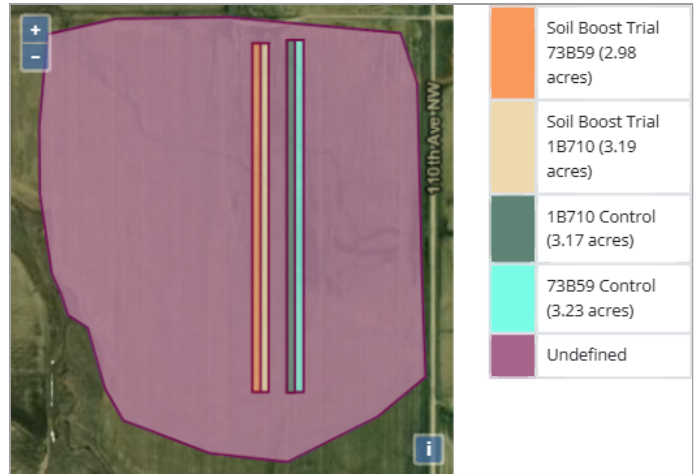


# Product Trial Report

## Planting Map



## Trial Zones



# Product Trial Report

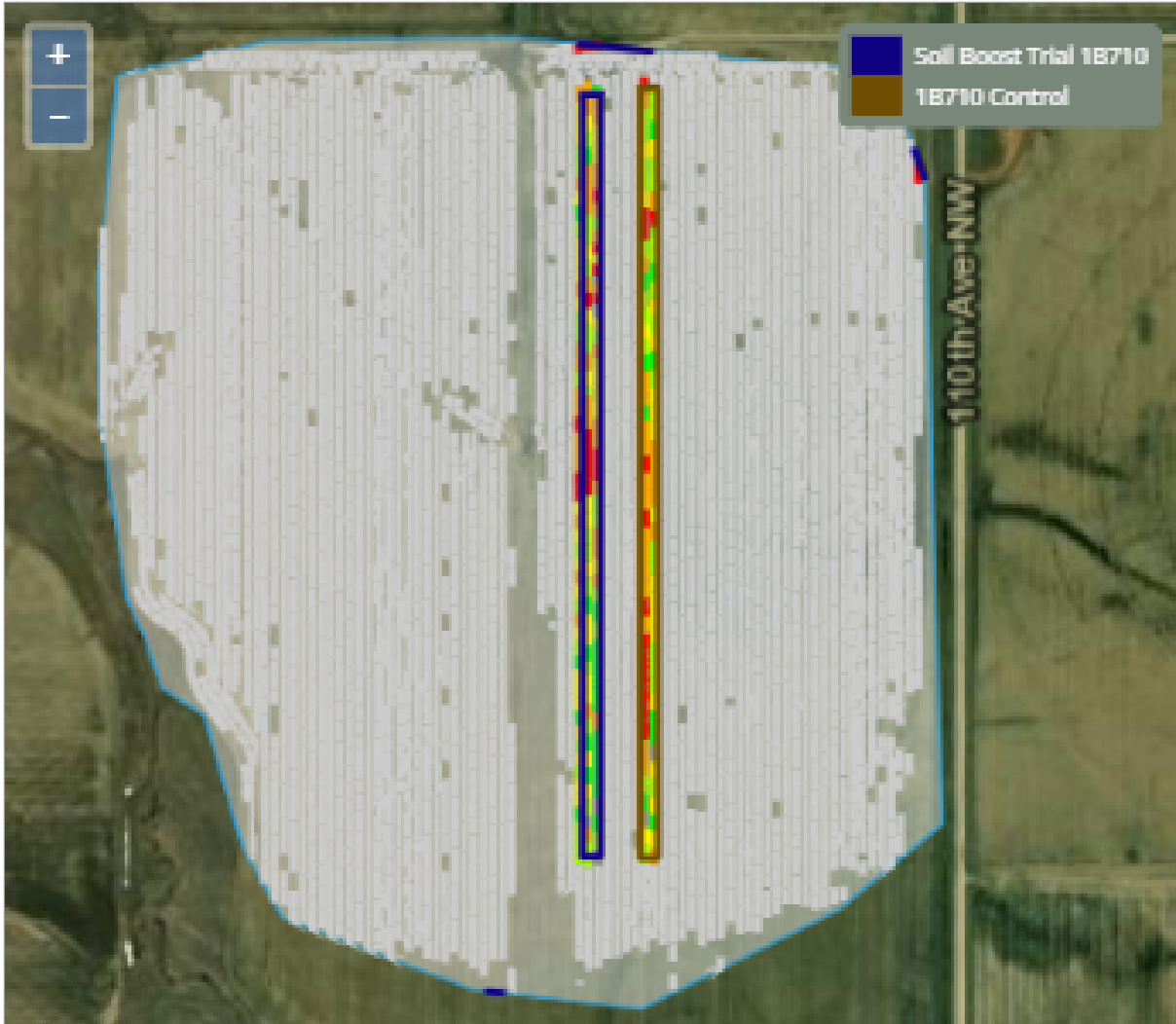
## Tissue Results Data

Date	GDUs	Water	Tissue Site	Nitrogen	Phosphorus	Potassium	Magnesium	Calcium	Sulfur	Zinc	Manganese	Copper	Iron	Boron	Aluminum	Molybdenum	Sodium
07/16/2024	628	-	Soil Boost	4.32 %	0.3 %	3.14 %	0.22 %	0.35 %	0.36 %	25.66 ppm	121.33 ppm	15.17 ppm	346 ppm	13.74 ppm		1.05 ppm	0.21 ppm
			Control	4.59 %	0.31 %	2.89 %	0.3 %	0.41 %	0.36 %	25.23 ppm	111.85 ppm	13.87 ppm	286 ppm	16.22 ppm		1.42 ppm	0.17 ppm
07/23/2024	798	1.1 in	Soil Boost	4.36 %	0.28 %	2.8 %	0.24 %	0.39 %	0.37 %	26.85 ppm	94.11 ppm	12.32 ppm	288 ppm	8.88 ppm		1.18 ppm	0.4 ppm
			Control	4.19 %	0.35 %	3.09 %	0.25 %	0.38 %	0.4 %	30.07 ppm	105.29 ppm	14.65 ppm	288 ppm	10.02 ppm		1.18 ppm	0.38 ppm
07/29/2024	934	1.1 in	Soil Boost	4 %	0.31 %	2.57 %	0.17 %	0.34 %	0.29 %	29.68 ppm	82.94 ppm	12.37 ppm	286.75 ppm	12.15 ppm		0.8 ppm	0.54 ppm
			Control	4.04 %	0.33 %	2.36 %	0.15 %	0.37 %	0.26 %	26.03 ppm	71.7 ppm	11.48 ppm	274.66 ppm	12.43 ppm		0.79 ppm	0.5 ppm
08/06/2024	1105	2.9 in	Soil Boost	3.4 %	0.35 %	2.56 %	0.18 %	0.29 %	0.26 %	37.5 ppm	73.98 ppm	12.17 ppm	202.42 ppm	12.37 ppm		1.17 ppm	0.23 ppm
			Control	3.43 %	0.37 %	2.4 %	0.25 %	0.39 %	0.27 %	37.64 ppm	89.7 ppm	10.48 ppm	194.45 ppm	13.67 ppm		1.09 ppm	0.22 ppm

# Product Trial Report

## Yield Results Data

### High Level Yield Heat Map



This data was filtered based on  $-1.5 / +1.5$  St Dev

Yield Summary BPA	
<i>Location</i>	<i>Yield</i>
Soil Boost Trial 1B710	146.59
1B710 Control	144.16
<b>Yield Response</b>	2.43

Yield Values	
●	93.6 - 123.3
●	123.8 - 142.8
●	143.3 - 153
●	153.1 - 162.4
●	162.5 - 178.6

# Product Trial Report

## **Product Trial Comments:**

This trial is Year 2 of a 3 year study using Soil Boost. This plot had 2 different hybrids planted in it. The 1B710 portion had a +2.43 bushel/acre yield response using the -1.5/+1.5 Standard Deviation measurement method to tighten yield data points. This plot had a projected 30% yield loss due to late plant date and a high wind event.

The original plot size was trimmed to address yield variation and to incorporate both hybrids into this study.

## **Penetrometer Readings**

The readings done in early August and mid September showed excellent progress being made to reduce compaction

### **8/6/24 Results**

- **Trial** - 200 psi at 18 inches. Buried probe to 36 inches, not over 300 psi
- **Control** - 200 psi at 10 inches. 22 inches at 300 psi

### **9/13/24 Results**

- **Trial** - 200 psi at 4 inches, 300 psi at 28 inches
- **Control** - 200 psi at 3 inches, 300 psi at 12 inches

## **Application Date and Details:**

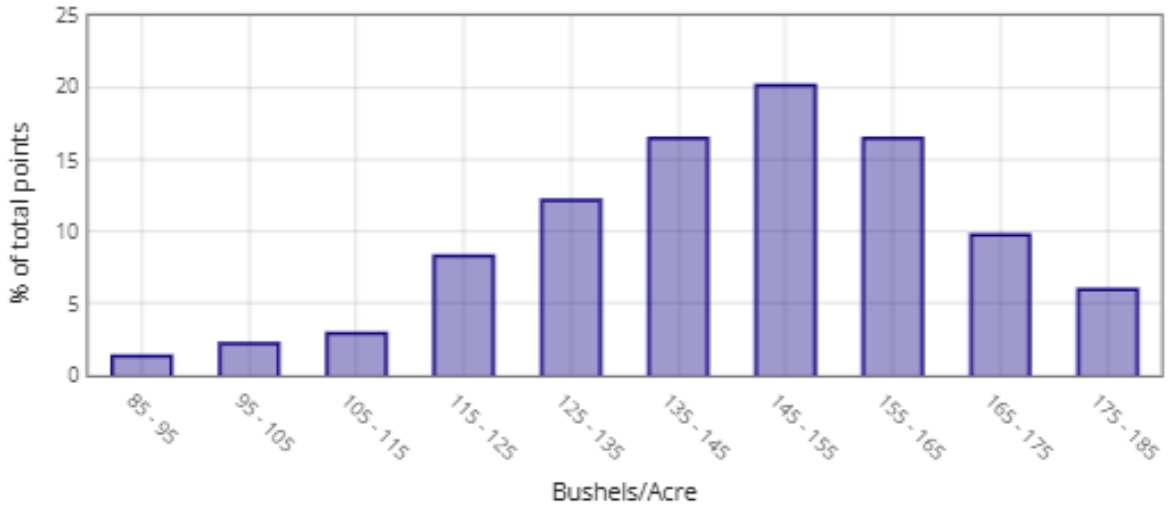
**Application Date:** 6/2/24

**Application Method:** Broadcast

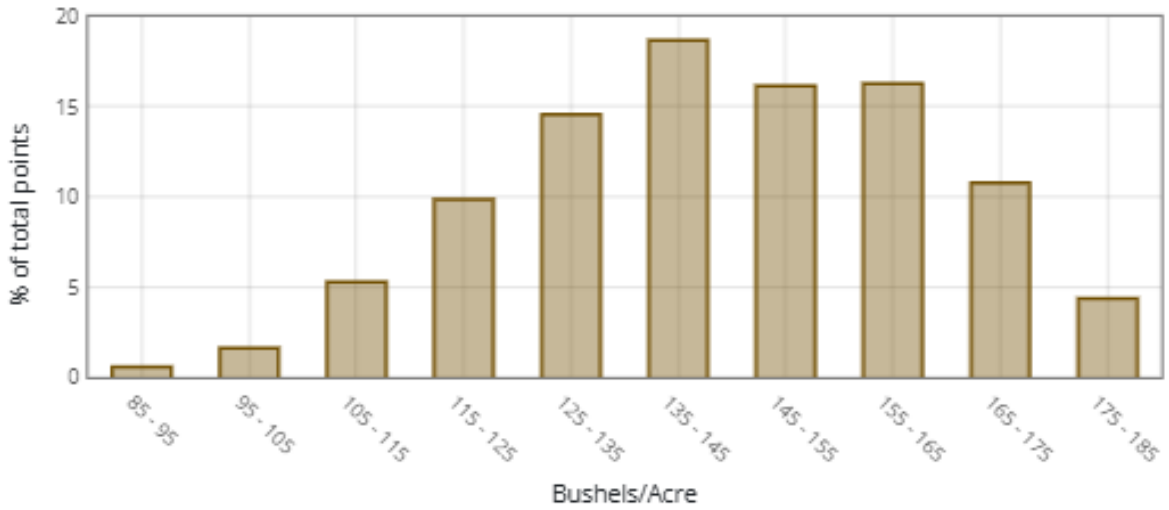
**Product Application Rate/Acre:** Soil Boost = 150 lbs.

# Product Trial Report

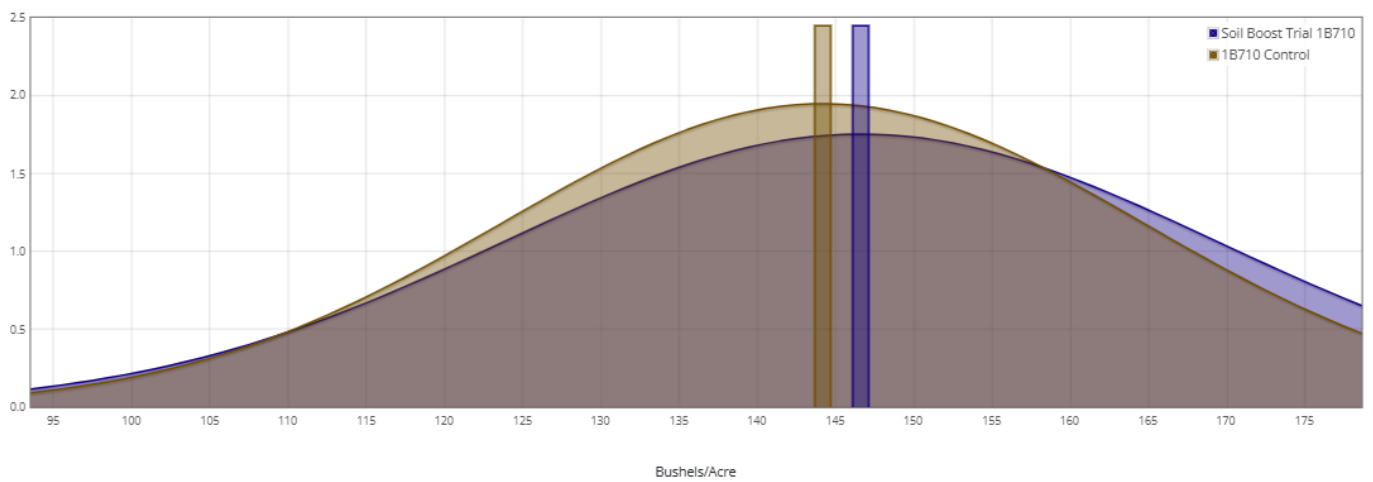
## Soil Boost Trial 1B710



## 1B710 Control



## Normal Curve Distribution



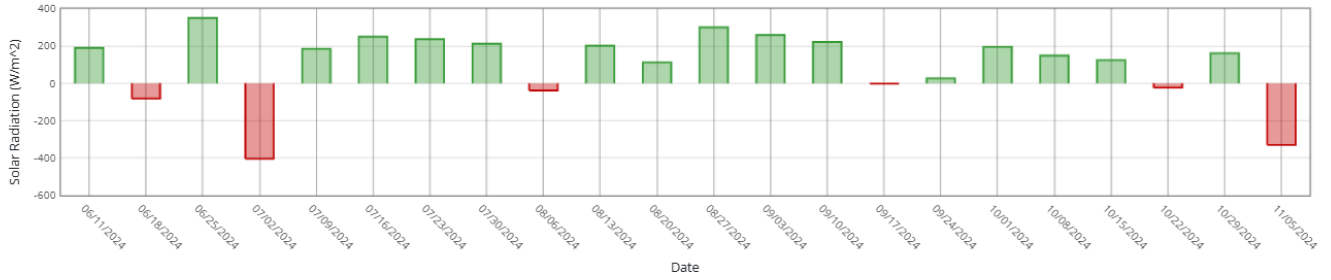
# Product Trial Report

## Trial Location Weather Data vs 5 Yr Avg

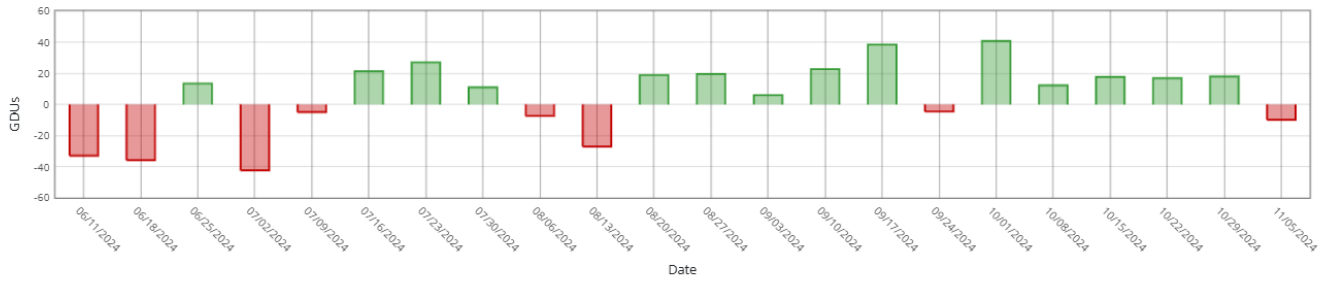
Historical Averages based on past  years

Cumulative  Week over Week

### Sunlight



### Heat (GDUs)



### Rain

